

abbotFox



Rouen Road, Norwich
£1,700

“

We are a team of genuine individuals who hold a deep passion for both property and marketing. Collectively, we bring over 70 years of experience in the property market of Norfolk and Suffolk. Our affection for both counties runs deep, and we are enthusiastic about sharing our passion with you.

Colin McKenzie | **Branch Partner**







THE DETAIL _____

abbotFox presents this stunning, duplex, penthouse apartment. Offering stunning Cathedral and City views, this home is offered to the market with no onward chain.

Accommodation is spread over two floors, with the lower level comprising an inviting entrance hall, kitchen breakfast room, two double bedrooms, en-suite shower room and family bathroom. This floor also benefits from a balcony, which allows access from both bedrooms and the kitchen. The upper floor offers a stunning lounge diner, with views over Norwich City and towards the Cathedral. With a further balcony, that leads to a generous terrace, the outside space on offer with this home is perfect for entertaining. The property also benefits from secure, allocated underground parking. An internal viewing comes highly recommended.





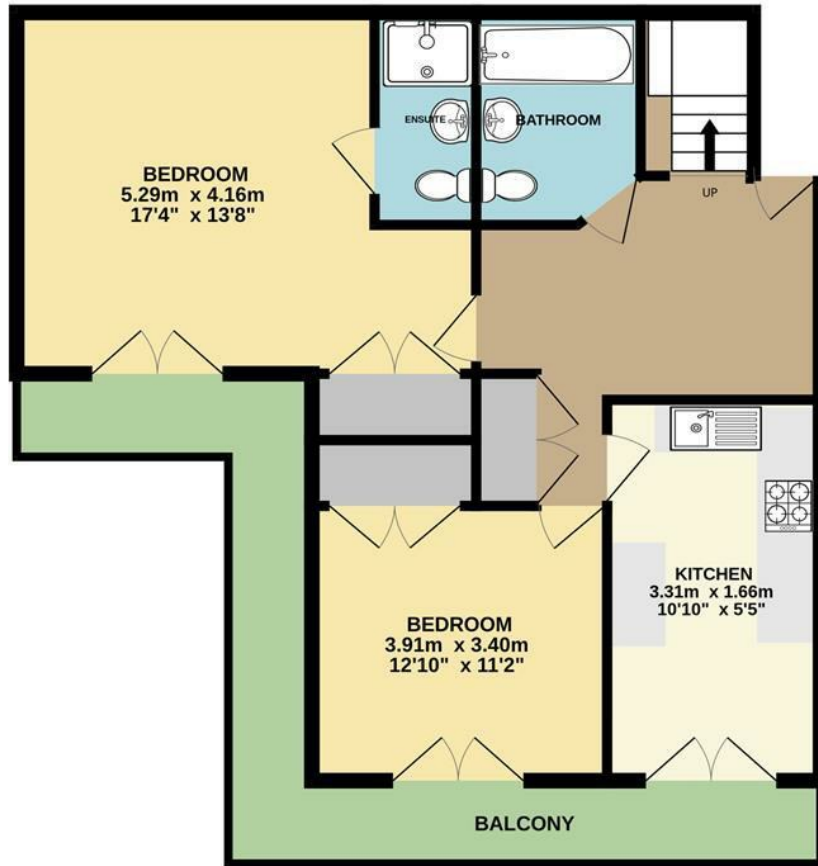


THE HIGHLIGHTS _____

- Penthouse, duplex apartment
- Two double bedrooms
- Stunning living accommodation
- Cathedral views
- Two balconies and terrace

GROUND FLOOR

1ST FLOOR



Whilst every attempt has been made to ensure the accuracy of the floorplan contained here, measurements of doors, windows, rooms and any other items are approximate and no responsibility is taken for any error, omission or mis-statement. This plan is for illustrative purposes only and should be used as such by any prospective purchaser. The services, systems and appliances shown have not been tested and no guarantee as to their operability or efficiency can be given.
 Made with Metropix ©2023

Let's talk

01603 660000

sales@abbotfox.co.uk

@abbotfox

EPC RATING - D

Disclaimer – In accordance with the Property Misdescriptions Act, the company abbotFox gives notice that all descriptions, references to condition, necessary permissions for use and other details are given in good faith and believed to be correct, but any purchaser should not rely on them as statements of fact, and must satisfy themselves by inspection or other means, as to their accuracy.